

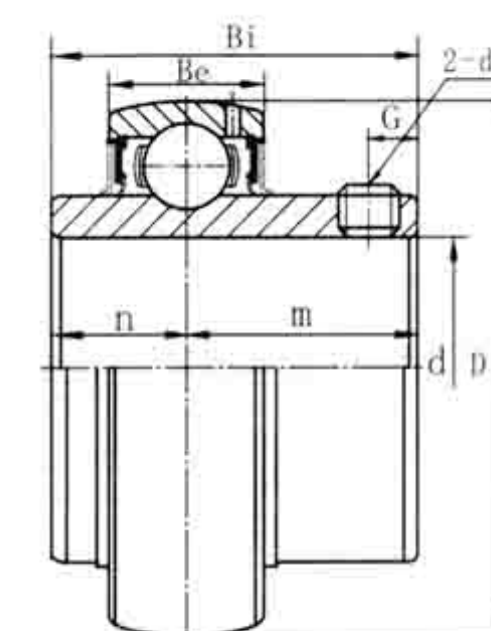
SR type seal



TRL type seal

UC 200

(normal-duty)



SR type seal



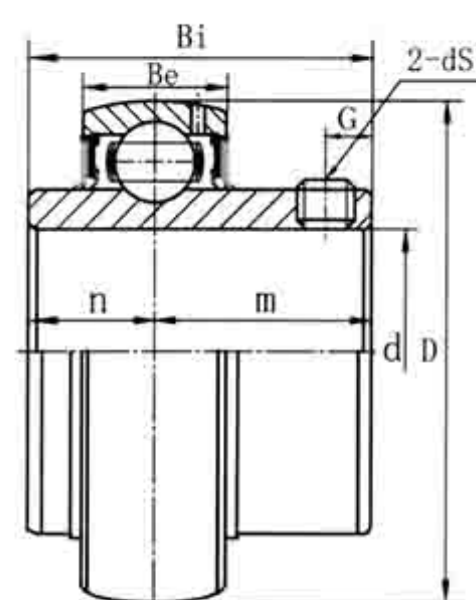
TRL type seal

UC X00

(medium-duty)

轴承代号 Bearing	轴径 Shaft Dia.	外形尺寸 (英寸) 或 (毫米) Dimensions(in)(mm)							额定动负荷 Basic Dynamic Load Rating	额定静负荷 Basic Static Load Rating	重量 Weight
No.	d	D	Bi	Be	n	M	G	ds	(Kgf)	(Kgf)	(Kg)
	(in)	(mm)									
UC 201	1/2	12	1.8504	1.2205	0.6693	0.5000	0.7205	0.1772	1000	630	0.21
UC 201-8	1/2	12	1.8504	1.2205	0.6693	0.5000	0.7205	0.1772	1000	630	0.21
UC 202	5/8	15	1.8504	1.2205	0.6693	0.5000	0.7205	0.1772	1000	630	0.19
UC 202-10	5/8	15	1.8504	1.2205	0.6693	0.5000	0.7205	0.1772	1000	630	0.19
UC 203	11/16	17	1.8504	1.2205	0.6693	0.5000	0.7205	0.1772	1000	630	0.18
UC 203-11	11/16	17	1.8504	1.2205	0.6693	0.5000	0.7205	0.1772	1000	630	0.18
UC 204-12	3/4	20	1.8504	1.2205	0.6693	0.5000	0.7205	0.1772	1000	630	0.16
UC 204	3/4	20	1.8504	1.2205	0.6693	0.5000	0.7205	0.1772	1000	630	0.16
UC 205-14	7/8	25	2.0472	1.3386	0.6693	0.5630	0.7760	0.2165	1100	710	0.23
UC 205-15	7/8	25	2.0472	1.3386	0.6693	0.5630	0.7760	0.2165	1100	710	0.21
UC 205	1	25	2.0472	1.3386	0.6693	0.5630	0.7760	0.2165	1100	710	0.20
UC 205-16	1	25	2.0472	1.3386	0.6693	0.5630	0.7760	0.2165	1100	710	0.20
UC 206-18	1 1/8	30	2.4409	1.5000	0.7480	0.6260	0.8740	0.2362	1520	1020	0.34
UC 206	1 1/8	30	2.4409	1.5000	0.7480	0.6260	0.8740	0.2362	1520	1020	0.32
UC 206-19	1 1/8	30	2.4409	1.5000	0.7480	0.6260	0.8740	0.2362	1520	1020	0.32
UC 206-20	1 1/8	30	2.4409	1.5000	0.7480	0.6260	0.8740	0.2362	1520	1020	0.32
UC 207-20	1 1/4	35	2.8346	1.6890	0.7874	0.6890	1.0000	0.2559	2010	1390	0.54
UC 207-21	1 1/4	35	2.8346	1.6890	0.7874	0.6890	1.0000	0.2559	2010	1390	0.51
UC 207-22	1 1/4	35	2.8346	1.6890	0.7874	0.6890	1.0000	0.2559	2010	1390	0.48
UC 207	1 1/4	35	2.8346	1.6890	0.7874	0.6890	1.0000	0.2559	2010	1390	0.46
UC 207-23	1 1/4	35	2.8346	1.6890	0.7874	0.6890	1.0000	0.2559	2010	1390	0.45
UC 208-24	1 1/2	40	3.1496	1.9370	0.8268	0.7480	1.1890	0.3150	2560	1810	0.68
UC 208-25	1 1/2	40	3.1496	1.9370	0.8268	0.7480	1.1890	0.3150	2560	1810	0.65
UC 208	1 1/2	40	3.1496	1.9370	0.8268	0.7480	1.1890	0.3150	2560	1810	0.62
UC 209-26	1 5/8	45	3.3465	1.9370	0.8661	0.7480	1.1890	0.3150	2560	1800	0.78
UC 209-27	1 5/8	45	3.3465	1.9370	0.8661	0.7480	1.1890	0.3150	2560	1800	0.74
UC 209-28	1 5/8	45	3.3465	1.9370	0.8661	0.7480	1.1890	0.3150	2560	1800	0.70
UC 209	1 5/8	45	3.3465	1.9370	0.8661	0.7480	1.1890	0.3150	2560	1800	0.68
UC 210-30	1 5/8	50	3.5433	2.0315	0.9449	0.7480	1.2835	0.3937	2750	2020	0.84
UC 210-31	1 5/8	50	3.5433	2.0315	0.9449	0.7480	1.2835	0.3937	2750	2020	0.79
UC 210	1 5/8	50	3.5433	2.0315	0.9449	0.7480	1.2835	0.3937	2750	2020	0.76
UC 210-32	1 5/8	50	3.5433	2.0315	0.9449	0.7480	1.2835	0.3937	2750	2020	0.76
UC 211-32	2	55	3.937	2.1890	0.9843	0.8740	1.3150	0.3937	3400	2550	1.26
UC 211-34	2	55	3.937	2.1890	0.9843	0.8740	1.3150	0.3937	3400	2550	1.15
UC 211	2	55	3.937	2.1890	0.9843	0.8740	1.3150	0.3937	3400	2550	1.01
UC 211-35	2	55	3.937	2.1890	0.9843	0.8740	1.3150	0.3937	3400	2550	1.09
UC 212-36	2 1/4	60	4.3307	2.5630	1.0630	1.0000	1.5630	0.3937	4100	3150	1.60
UC 212	2 1/4	60	4.3307	2.5630	1.0630	1.0000	1.5630	0.3937	4100	3150	1.45
UC 212-38	2 1/4	60	4.3307	2.5630	1.0630	1.0000	1.5630	0.3937	4100	3150	1.45
UC 212-39	2 1/4	60	4.3307	2.5630	1.0630	1.0000	1.5630	0.3937	4100	3150	1.33
UC 213-40	2 1/2	65	4.7244	2.5630	1.1024	1.0000	1.5630	0.3937	4480	3470	1.94
UC 213	2 1/2	65	4.7244	2.5630	1.1024	1.0000	1.5630	0.3937	4480	3470	1.80
UC 214-44	2 3/4	70	4.9213	2.9370	1.1811	1.1890	1.7480	0.4724	4870	3810	2.06
UC 214	2 3/4	70	4.9213	2.9370	1.1811	1.1890	1.7480	0.4724	4870	3810	1.99
UC 215	2 5/8	75	5.1181	3.0630	1.1811	1.3110	1.7520	0.4724	5190	4190	2.19
UC 215-47	2 5/8	75	5.1181	3.0630	1.1811	1.3110	1.7520	0.4724	5190	4190	2.12
UC 215-48	2 5/8	75	5.1181	3.0630	1.1811	1.3110	1.7520	0.4724	5190	4190	2.12
UC 216	3	80	5.5118	3.2520	1.2992	1.3110	1.9410	0.5512	5700	4550	2.72
UC 216-50	3	80	5.5118	3.2520	1.2992	1.3110	1.9410	0.5512	5700	4550	2.72
UC 217-52	3 1/4	85	5.9055	3.3740	1.3780	1.3425	2.0315	0.5512	6600	5320	3.66
UC 217	3 1/4	85	5.9055	3.3740	1.3780	1.3425	2.0315	0.5512	6600	5320	3.45
UC 218-56	3 1/2	90	6.2992	3.7795	1.4567	1.5630	2.2165	0.5512	7500	6170	4.46
UC 218	3 1/2	90	6.2992	3.7795	1.4567	1.5630	2.2165	0.5512	7500	6170	4.35

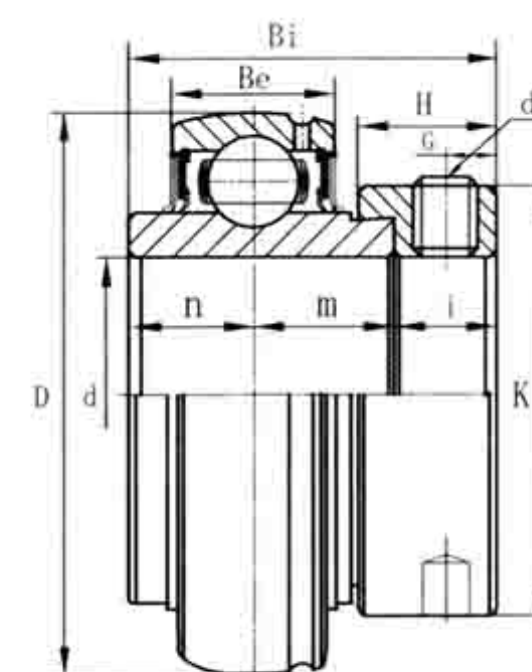
轴承代号 Bearing	轴径 Shaft Dia.	外形尺寸 (英寸) 或 (毫米) Dimensions(in)(or)(mm)							额定动负荷 Basic Dynamic Load Rating	额定静负荷 Basic Static Load Rating	重量 Weight
No.	d	D	Bi	Be	n	M	G	ds	(Kgf)	(Kgf)	(Kg)
	(in)	(mm)									
UC X05		25	2.4409	1.5000	0.7480	0.6260	0.8740	0.2362	1520	1020	0.38
X05-16	1	62	38.1	19	15.9	22.2	6.0	1/4-28UNF M6X1.0			0.37
UC X06		30	2.8346	1.6890	0.7874	0.6890	1.0000	0.2559	2010	1390	0.55
X06-19	1 3/16	72	42.9	20	17.5	25.4	6.5	5/16-24UNF M8X1.0			0.54
X06-20	1 1/4										0.52
UC X07-20	1 1/4										0.79
X07-22	1 3/8										0.73
X07		35	3.1496	1.9370	0.8268	0.7480	1.1890	0.3150	2560	1610	0.72
X07-23	1 7/16	80	49.2	21	19.0	30.2	8.0	5/16-24UNF M8X1.0			0.69
UC X08-24	1 1/2										0.84
X08		40	3.3465	1.9370	0.8661	0.7480	1.1890	0.3150	2650	1910	0.80
			85	49.2	22	19.0	30.2	8.0	5/16-24UNF M8X1.0		
X09-27	1 1/16										0.96
UC X09-28	1 3/4										0.92
X09		45	3.5433	2.0315	0.9449	0.7480	1.2835	0.3937	2750	2020	0.90
			90	51.6	24	19.0	32.6	10	3/8-24UNF M10X1.0		
UC X10-31	1 5/16										1.22
X10		50	3.9370	2.1890	0.9843	0.8740	1.3150	0.3937	3400	2550	1.20
X10-32	2										1.17
			100	55.6	25	22.2	33.4	10	3/8-24UNF M10X1.0		
UC X11		55									1.67
X11-32	2										1.85
X11-35	2 3/16		4.3307	2.5630	1.0630	1.0000	1.5630	0.3937	4100	3150	1.65
X11-36	2 1/4		110	65.1	27	25.4	39.7	10	3/8-24UNF M10X1.0		1.58
	4										
UC X12		60									2.04
X12-36	2 1/4										2.18
X12-38	2 3/8		4.7244	2.5630	1.1024	1.0000	1.5630	0.3937	4480	3470	2.03
X12-39	2 7/16		120	65.1	28	25.4	39.7	10	3/8-24UNF M10X1.0		1.95
UC X13-40	2 1/2										2.38
X13		65	4.9213	2.9370	1.1811	1.1890	1.7480	0.4724	4870	3810	2.30
			125	74.6	30	30.2	44.4	12.0	7/16-20UNF M12X1.5		
UC X14-44	2 3/4										2.54
X14		70	5.1181	3.0630	1.1811	1.3110	1.7520	0.4724	5190	4190	2.53
			130	77.8	30	33.3	44.5	12.0	7/16-20UNF M12X1.5		
UC X15		75	5.5118	3.2520	1.2992	1.3110	1.9410	0.5512	5700	4550	3.41
X15-47	2 5/16										3.32
X15-48	3		140	82.6	33	33.3	49.3	14.0	7/16-20UNF M12X1.5		
UC X16		80	5.9055	3.3740	1.3780	1.3425	2.0315	0.5511	6600	5320	3.87
X16-50	3 1/8		150	85.7	35	34.1	51.6	14.0	7/16-20UNF M12X1.5		
UC X17		85	6.2992	3.7795	1.4567	1.5630	2.2165	0.5906	7550	6170	5.05
X17-52	3 1/4		160	96.0	37	39.7	56.3	15.0	7/16-20UNF M12X1.5		
UC X18-56	3 1/2										6.12
X18		90	6.6929	4.0945	1.5354	1.6890	2.4055	0.6299	10900	8170	6.00
			170	104.0	39	42.9	61.1	16.0	1/2-20UNF M14X1.5		
UC X20		100	7.4803	4.6260	1.7323	1.9370	2.6890	0.7087	13300	10500	8.56
X20-64	4		190	117.5	44	49.2	68.3	18.0	5/8-18UNF M16X1.5		8.33



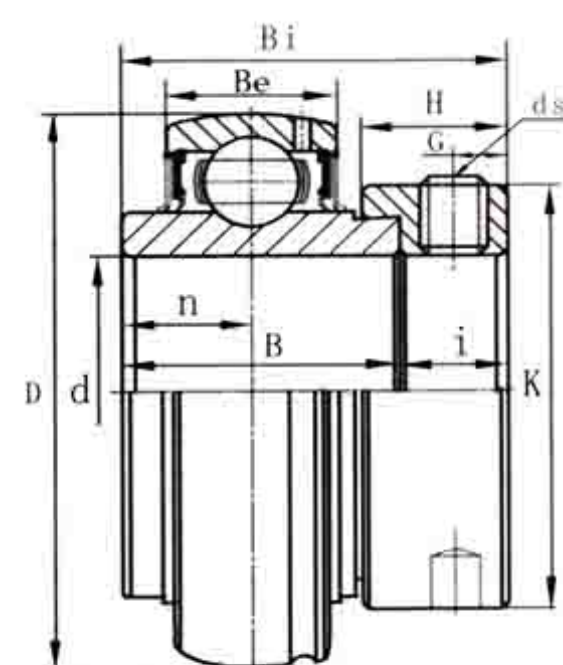
UC 300
(heavy-duty)

轴承代号 Bearing	轴径 Shaft Dia.	外形尺寸 (英寸) 或 (毫米) Dimensions(in)(or)(mm)								额定动负荷 Basic Dynamic Load Rating	额定静负荷 Basic Static Load Rating	重量 Weight
(No.)	d	D	Bi	Be	n	M	G	ds				
(in) (mm)									(Kgf)	(Kgf)	(Kg)	
UC 305	25	2.4409	1.4961	0.8661	0.5906	0.9055	0.2362	1/4-28UNF	1760	1160	0.45	
305-16	1	62	38	22	15	23	6	M6X1.0			0.44	
UC 306-18	1 1/8	2.8346	1.6929	0.9449	0.6693	1.0236	0.2362	1/4-28UNF	2119	1445	0.58	
306	30	72	43	24	17	26	6	M6X1.0			0.56	
306-20	1 1/4											
UC 307-20	1 1/4	3.1496	1.8897	1.0236	0.7480	1.1417	0.3150	5/16-24UNF	2620	1830	0.77	
307-22	1 3/8	80	48	26	19	29	8	M8X1.0			0.71	
307	35										0.71	
UC 308-24	1 1/2	3.5433	2.0472	1.1024	0.7480	1.2992	0.3937	3/8-24UNF	3200	2280	1.05	
308	40	90	52	28	19	33	10	M10X1.25			1.00	
UC 309-28	1 3/4	3.9370	2.2441	1.1811	0.8661	1.3780	0.3937	3/8-24UNF	4150	3060	1.35	
309	45	100	57	30	22	35	10	M10X1.25			1.33	
UC 310-31	1 5/16	4.3307	2.4015	1.2595	0.8661	1.5354	0.4724	1/2-20UNF	4850	3640	1.72	
310	50	110	61	32	22	39	12	M12X1.5			1.69	
310-32	2											
UC 311-32	2	4.7244	2.5984	1.3386	0.9842	1.6142	0.4724	1/2-20UNF	5620	4280	2.08	
311	55	120	66	34	25	41	12	M12X1.5			1.90	
UC 312	60	5.1181	2.7953	1.4173	1.0236	1.7717	0.4724	1/2-20UNF	6420	4960	2.60	
312-36	2 1/4	130	71	36	26	45	12	M12X1.5				
UC 313-40	2 1/2	5.5118	2.9528	1.4961	1.1881	1.7717	0.4724	1/2-20UNF	7370	5780	3.24	
313	65	140	75	38	30	45	12	M12X1.5			3.16	
UC 314-44	2 3/4	5.9055	3.0709	1.5748	1.2992	1.7717	0.4724	1/2-20UNF	8170	6480	3.91	
314	70	150	78	40	33	45	12	M12X1.5			3.90	
UC 315	75	6.2992	3.2283	1.6535	1.2598	1.9685	0.5512	9/16-18UNF	8900	7310	4.70	
315-48	3	160	82	42	32	50	14	M14X1.5			4.61	
UC 316	80	6.6929	3.3858	1.7323	1.3386	2.0472	0.5512	9/16-18UNF	9650	8330	5.60	
316-50	3 1/8	170	86	44	34	52	14	M14X1.5				
UC 317	85	7.0866	3.7795	1.8110	1.5748	2.2047	0.6299	5/8-18UNF	10410	9130	6.90	
317-52	3 1/4	180	96	46	40	56	16	M16X1.5				
UC 318-56	3 1/2	7.4803	3.7795	1.8898	1.5748	2.2047	0.6299	5/8-18UNF	11300	10300	8.03	
318	90	190	96	48	40	56	16	M16X1.5			7.87	
UC 319	95	7.8740	4.0551	1.9685	1.6142	2.4409	0.6299	5/8-18UNF	12300	11600	8.91	
		200	103	50	41	62	16	M16X1.5				
UC 320	100	8.4646	4.2519	2.2160	1.6535	2.5984	0.7087	5/8-18UNF	13580	13860	11.2	
320-64	4	215	108	54	42	66	18	M18X1.5			11.0	
UC 322	110	9.4488	4.6063	2.3622	1.8110	2.7953	0.7087	5/8-18UNF	20500	17900	15.1	
		240	117	60	46	71	18	M18X1.5				
UC 324	120	10.2362	4.9606	2.5197	2.0079	2.9527	0.7087	5/8-18UNF	20700	18500	19.0	
		260	126	64	51	75	18	M18X1.5				
UC 326	130	11.0236	5.3150	2.6772	2.1260	3.1890	0.7874	3/4-16UNF	22900	21400	23.6	
		280	135	68	54	81	20	M20X1.5				
UC 328	140	11.8110	5.7086	2.8346	2.3228	3.3858	0.7874	3/4-16UNF	25300	24600	29.4	
		300	145	72	59	86	20	M20X1.5				

HC 200
(normal-duty)



轴承代号 Bearing	轴径 Shaft Dia.	外形尺寸 (英寸) 或 (毫米) Dimensions(in)(mm)											额定动负荷 Basic Dynamic Load Rating	额定静负荷 Basic Static Load Rating	重量 Weight											
(No.)	d	D	Bi	Be	n	m	i	K	H	G	ds		(Kgf)	(Kgf)	(Kg)											
(in) (mm)																										
HC 203	17	1.5748	1.4685	0.5512	0.5472	0.5472	0.3740	1.1260	0.5315	0.1968	1/4-28UNF	900	510	0.25												
203-11	1 11/16	40	37.3	14	13.9	13.9	9.5	28.6	13.5	5.0	M6X1															
HC 204-12	3/4	1.8504	1.7205	0.6693	0.6732	0.6732	0.3740	1.3110	0.5315	0.1968	1/4-28UNF	1010	630	0.23												
204	20	47	43.7	17	17.1	17.1	9.5	33.3	13.5	5.0	M6X1															
HC 205-14	7/8	2.0472	1.7441	0.6693	0.6850	0.6850	0.3740	1.5000	0.5315	0.1968	1/4-28UNF	1100	710	0.29												
205-15	15/16														25	52	44.3	17	17.4	17.4	9.5	38.1	13.5	5.0	M6X1	
205	25																									
205-16	1														0.27											
HC 206-18	1 1/8	30	2.4409	1.9055	0.7480	0.7205	0.7165	0.4685	1.7520	0.6260	0.2362	5/16-24UNF	1530	1020	0.25											
206	30	62	48.4	19	18.3	18.2	11.9	44.5	15.9	6.0	M8X1															
206-19	1 3/16											0.41														
206-20	1 1/4											0.41														
HC 207-20	1 1/4	35	2.8346	2.0118	0.7874	0.7402	0.7402	0.5315	2.1890	0.6890	0.2559	5/16-24UNF	2020	1390	0.68											
207-22	1 3/8															72	51.1	20	18.8	18.8	13.5	55.6	17.5	6.5	M8X1	
207	1 3/8																									0.61
207-23	1 7/16																									0.61
HC 208-24	1 1/2	40	3.1496	2.2165	0.8268	0.8425	0.8425	0.5315	2.3740	0.7205	0.2559	5/16-24UNF	2280	1600	0.58											
208	40	80	56.3	21	21.4	21.4	13.5	60.3	18.3	6.5	M8X1															
HC 209-26	1 5/8	45	3.3465	2.2165	0.8661	0.8425	0.8425	0.5315	2.5000	0.7205	0.2559	5/16-24UNF	2570	2020	0.83											
209-27	1 11/16															85	56.3	22	21.4	21.4	13.5	63.5	18.3	6.5	M8X1	
209-28	1 3/4																									0.79
209	45																									0.78
HC 210-31	1 15/16	50	3.5433	2.4685	0.9449	0.9685	0.9685	0.5315	2.7520	0.7205	0.2559	5/16-24UNF	2750	2020	0.96											
210	50	90	62.7	24	24.6	24.6	13.5	69.9	18.3	6.5	M8X1															
HC 210-32	2														0.91											
HC 211-32	2	55	3.9370	2.8110	0.9843	1.0940	1.0906	0.6260	3.0000	0.8150	0.3150	5/16-24UNF	3400	2550	0.87											
211	55	100	71.4	25	27.8	27.7	15.9	76.2	20.7	8.0	M10X1															
HC 211-35	2 3/16														0.85											
HC 212-36	2 1/4	60	4.3307	3.0630	1.0630	1.2200	1.2165	0.6260	3.3150	0.8780	0.3150	5/16-24UNF	4100	3150	1.04											
212	60	110	77.8	27	31.0	30.9	15.9	84.2	22.3	8.0	M10X1															
212-39	2 7/16											1.01														
HC 213-40	2 1/2	65	4.7244	3.3740	1.1024	1.3425	1.3580	0.6732	3.3858	0.9252	0.3346	3/8-24UNF	4500	3470	2.03											
213	65	120	85.7	28	34.1	34.5	17.1	86	23.5	8.5	M10X1															
HC 215-47	2 15/16	75	5.1181	3.6260	1.1811	1.4685	1.4840	0.6732	4.0157	0.9252	0.3346	3/8-24UNF	5300	4200	1.87											
215	75	130	92.1	30	37.3	37.7	17.1	102	23.5	8.5	M10X1															
215-48	3														1.76											



SR type seal

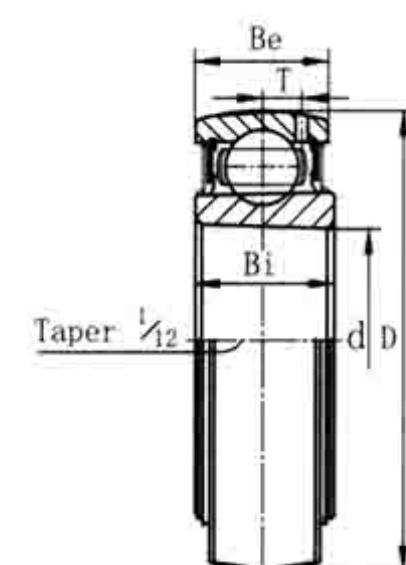


TRL type seal

HC 300
(heavy-duty)

轴承代号 Bearing	轴径 Shaft Dia.	外形尺寸 (英寸) 或 (毫米) Dimensions(in) or (mm)										额定动负荷 Basic Dynamic Load Rating	额定静负荷 Basic Static Load Rating	重量 Weight
No.	d	D	Bi	Be	n	B	i	K	H	G	ds	(Kgf)	(Kgf)	(Kg)
	(in)	(mm)												
HC 305-14	7/8													0.46
305-15	15/16	25	2.4409	1.8425	0.8661	0.6575	1.3740	0.4685	1.6850	0.6260	0.2362	5/16-24UNF	2280	1170
305			62	46.8	22	16.7	34.9	11.9	42.8	15.9	6	M8X1.0		0.44
305-16	1													0.43
HC 306-18	1 1/8	30	2.8346	1.9685	0.9449	0.6890	1.4370	0.5315	1.9685	0.6890	0.2638	5/16-24UNF	2750	1550
306			72	50	24	17.5	36.5	13.5	50	17.5	6.7	M8X1.0		0.68
306-20	1 1/4													0.68
HC 307-20	1 1/4													0.86
307-21	1 9/16													0.83
307-22	1 3/8	35	3.1496	2.0315	1.0236	0.7205	1.5000	0.5315	2.1654	0.6890	0.2683	5/16-24UNF	3410	1960
307			80	51.6	26	18.3	38.1	13.5	55	17.5	6.7	M8X1.0		0.80
307-23	1 7/16													0.78
HC 308-24	1 1/2													1.13
308-25	1 9/16	40	3.5433	2.2480	1.1024	0.7795	1.6260	0.6220	2.5000	0.8110	0.3150	3/8-24UNF	4130	2440
308			90	57.1	28	19.8	41.3	15.8	63.5	20.6	8	M10X1.25		1.13
HC 309-26	1 5/8													1.57
309-27	1 1/2													1.52
309-28	1 3/4	45	3.9370	2.3110	1.1811	0.7795	1.6890	0.6220	2.7559	0.8110	0.3150	3/8-24UNF	5400	3240
309			100	58.7	30	19.8	42.9	15.8	70	20.6	8	M10X1.25		1.47
HC 310-30	1 7/8													1.93
310-31	1 9/16	50	4.3307	2.6220	1.2595	0.9685	1.9370	0.6850	3.0000	0.8740	0.3425	3/8-24UNF	6300	3850
310			110	66.6	32	24.6	49.2	17.4	76.2	22.2	8.7	M10X1.25		1.88
310-32	2													1.84
HC 311-32	2													2.49
311-34	2 1/8	55	4.7244	2.870	1.3386	1.0945	2.1890	0.6850	3.2677	0.8740	0.3543	7/16-20UNF	7290	4570
311			120	73	34	27.8	55.6	17.4	83	22.2	9	M10X1.25		2.36
311-35	2 3/16													2.30
HC 312-36	2 1/4													2.24
312		60	5.1181	3.1260	1.4173	1.2185	2.4370	0.6890	3.5039	0.9409	0.3543	7/16-20UNF	8320	5280
312-38	2 3/8													2.89
312-39	2 1/2													2.89
HC 313-40	2 1/2													2.86
313		65	5.5118	3.3740	1.4961	1.2795	2.5630	0.8110	3.8189	1.0630	0.4528	7/16-20UNF	9570	6170
HC 314-44	2 3/4													3.85
314		70	5.9055	3.6260	1.5748	1.3445	2.6890	0.9370	4.0157	1.1890	0.4724	1/2-20UNF	10630	6930
HC 315		75	6.2992	3.9370	1.6535	1.4685	2.9370	1.0000	4.4488	1.2520	0.5118	5/8-18UNF	11560	7830
315-48	3													3.66
HC 316		80	6.6929	4.1890	1.7323	1.5945	3.1890	1.0000	4.6850	1.2520	0.5118	5/8-18UNF	12530	8820
316-50	3 1/8													4.40
HC 317		85	7.0866	4.3110	1.8110	1.6535	3.3110	1.0000	5.0000	1.2520	0.5118	5/8-18UNF	13530	9840
317-52	3 1/4													4.50
HC 318-56	3 1/2													5.34
318		90	7.4803	4.5630	1.8898	1.7165	3.4370	1.1260	5.2362	1.4370	0.5709	3/4-16UNF	14590	11020
HC 319		95	7.8740	4.8150	1.9685	1.8425	3.6890	1.1260	5.5118	1.4370	0.5709	3/4-16UNF	15910	12440
319-60	3 3/4													9.10
HC 320		100	8.4646	5.0630	2.2160	1.9685	3.9370	1.1260	5.7480	1.4370	0.5709	3/4-16UNF	17510	14280
320-64	4													9.10
			215	128.6	54	50	100	28.6	146	36.5	14.5	M20X1.5		13.0

UK 200
(normal-duty)

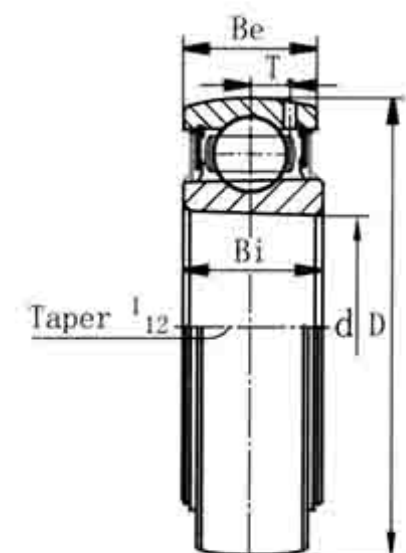


SR type seal



TRL type seal

轴承代号 Bearing	轴径 Shaft Dia.	外形尺寸 (英寸) 或 (毫米) Dimensions(in) or (mm)					额定动负荷 Basic Dynamic Load Rating	额定静负荷 Basic Static Load Rating	重量 Weight
No.	d	D	Bi	Be	T	(in)	(Kgf)	(Kgf)	(Kg)
	(mm)					(TRL)			
UK 205	25	2.0472	0.9055	0.6693	0.9449	0.1654	1100	710	0.16
		52	23	17	24	4.2			
UK 206	30	2.4409	1.0236	0.7480	1.0630	0.2047	1540	1020	0.25
		62	26	19	27	5.2			
UK 207	35	2.8346	1.1024	0.7874	1.1811	0.2323	2030	1400	0.37
		72	28	20	30	5.9			
UK 208	40	3.1496	1.1417	0.8267	1.3386	0.2441	2300	1600	0.47
		80	29	21	34	6.2			
UK 209	45	3.3465	1.2205	0.8661	1.4173	0.2598	2570	1810	0.52
		85	31	22	36	6.6			
UK 210	50	3.5433	1.2205	0.9449	1.4173	0.2559	2760	2010	0.59
		90	31	24	36	6.5			
UK 211	55	3.9370	1.3386	0.9843	1.5748	0.2756	3400	2550	0.80
		110	34	25	40	7.0			
UK 212	60	4.3307	1.4173	1.0630	1.8504	0.2992	4100	3150	1.02
		110	36	27	47	7.6			
UK 213	65	4.7244	1.4173	1.1024	1.8504	0.3346	4500	3500	1.34
		120	36	28	47	8.5			
UK 215	75	5.1181	1.6142	1.1811	2.0079	0.3543	5200	4200	1.50
		130	41	30	51	9.0			
UK 216	80	5.5118	1.7323	1.2992	2.1654	0.4055	5700	4550	1.96
		140	44	33	55	10.3			
UK 217	85	5.9055	1.8110	1.3780	2.2441	0.4016	6550	5500	2.42
		150	46	35	57	10.2			
UK 218	90	6.2992	1.8898	1.4567	2.4803	0.4409	7500	6300	3.00
		160	48	37	63	11.2			

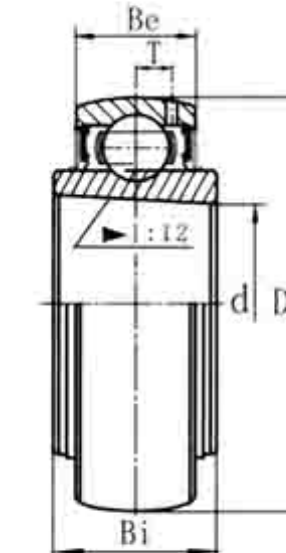


UK X00
(medium-duty)

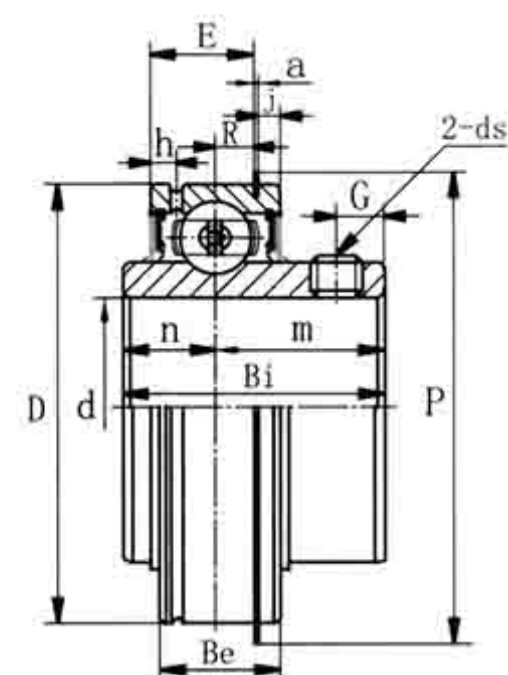
轴承代号 Bearing	轴径 Shaft Dia.	外形尺寸 (英寸) 或 (毫米) Dimensions(in)or(mm)				额定动负荷 Basic Dynamic Load Rating	额定静负荷 Basic Static Load Rating	重量 Weight
No.	d	D	Bi	Be	T			
	(mm)					(Kgf)	(Kgf)	(Kg)
UK X05	25	2.4409 62	1.0236 26	0.7480 19	0.2047 5.2	2000	1150	0.37
UK X06	30	2.8346 72	1.0630 27	0.7874 20	0.2323 5.9	2640	1570	0.54
UK X07	35	3.1496 80	1.1417 29	0.8267 21	0.2441 6.2	2990	1820	0.7
UK X08	40	3.3465 85	1.1811 30	0.8661 22	0.2598 6.6	3360	2090	0.81
UK X09	45	3.5433 90	1.2205 31	0.9449 24	0.2559 6.5	3620	2360	0.94
UK X10	50	3.9370 100	1.2992 33	0.9843 25	0.2756 7.0	4380	3000	1.22
UK X11	55	4.3307 110	1.4173 36	1.0630 27	0.2992 7.6	5350	3680	1.54
UK X12	60	4.7244 120	1.4960 38	1.1024 28	0.3346 8.5	5860	4080	1.89
UK X13	65	4.9212 125	1.5748 40	1.1811 30	0.3543 9.0	6320	4480	2.09
UK X15	75	5.5118 140	1.7323 44	1.2992 33	0.4055 10.3	7390	5400	3.25
UK X16	80	5.9055 150	1.8110 46	1.3780 35	0.4016 10.2	8520	6300	3.86
UK X17	85	6.2992 160	1.9291 49	1.4567 37	0.4409 11.2	9740	7280	4.72
UK X18	90	6.6929 170	2.0472 52	1.4960 38	0.4685 11.9	11120	8320	5.11
UK X20	100	7.4803 190	2.2835 58	1.6535 42	0.5118 13	13670	10680	8.1



UK 300
(heavy-duty)



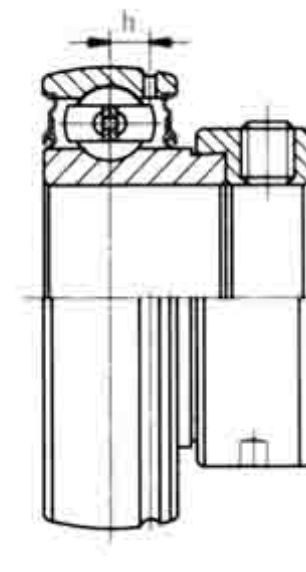
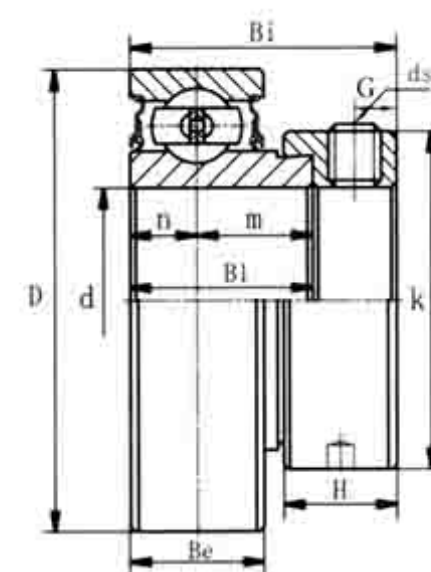
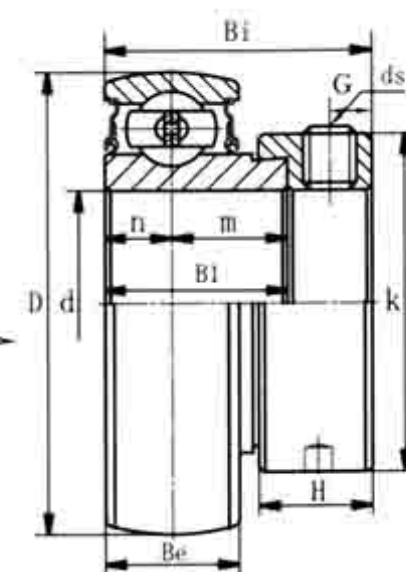
轴承代号 Bearing	轴径 Shaft Dia.	外形尺寸 (英寸) 或 (毫米) Dimensions(in)or(mm)				额定动负荷 Basic Dynamic Load Rating	额定静负荷 Basic Static Load Rating	重量 Weight
No.	d	D	Bi	Be	T			
	(mm)					(Kgf)	(Kgf)	(Kg)
UK 305	25	2.4409 62	1.0630 27	0.8661 22	0.2401 6.1	2170	1110	0.48
UK 306	30	2.8346 72	1.1811 30	0.9449 24	0.2638 6.7	2730	1530	0.59
UK 307	35	3.1496 80	1.2992 33	1.0236 26	0.2913 7.4	3410	1960	0.74
UK 308	40	3.5433 90	1.3780 35	1.1024 28	0.3228 8.2	4130	2430	1.01
UK 309	45	3.9370 100	1.4961 38	1.1811 30	0.3543 9	5250	3010	1.31
UK 310	50	4.3307 110	1.5748 40	1.2598 32	0.3937 10	6270	3890	1.68
UK 311	55	4.7244 120	1.6929 43	1.3386 34	0.4212 10.7	7290	4570	2.06
UK 312	60	5.1181 130	1.8504 47	1.4173 36	0.4527 11.5	8310	5300	2.53
UK 313	65	5.5118 140	1.8898 48	1.4961 38	0.4803 12.2	9430	6090	3.07
UK 315	75	6.2992 160	2.1259 54	1.6535 42	0.5433 13.8	11630	7840	4.74
UK 316	80	6.6929 170	2.1654 55	1.7323 44	0.5709 14.5	12550	8810	5.62
UK 317	85	7.0866 180	2.3622 60	1.8110 46	0.6063 15.4	13470	9840	6.56
UK 318	90	7.4803 190	2.4803 63	1.8898 48	0.6496 16.5	14590	10930	7.52
UK 319	95	7.8740 200	2.5984 66	1.9685 50	0.6574 16.7	15610	12080	8.72
UK 320	100	8.4646 215	2.8346 72	2.1260 54	0.7480 19	17650	14320	10.8
UK 322	110	9.4488 240	3.1496 80	2.3622 60	0.8268 21	20910	18240	14.4
UK 324	120	10.2362 260	3.3858 86	2.5197 64	0.8661 22	21120	18850	18.0
UK 326	130	11.0236 280	3.6220 92	2.6772 68	0.9055 23	23360	21860	23.2
UK 328	140	11.8110 300	3.8582 98	2.8346 72	0.9843 25	26020	25100	28.8



SER 200
(normal-duty)

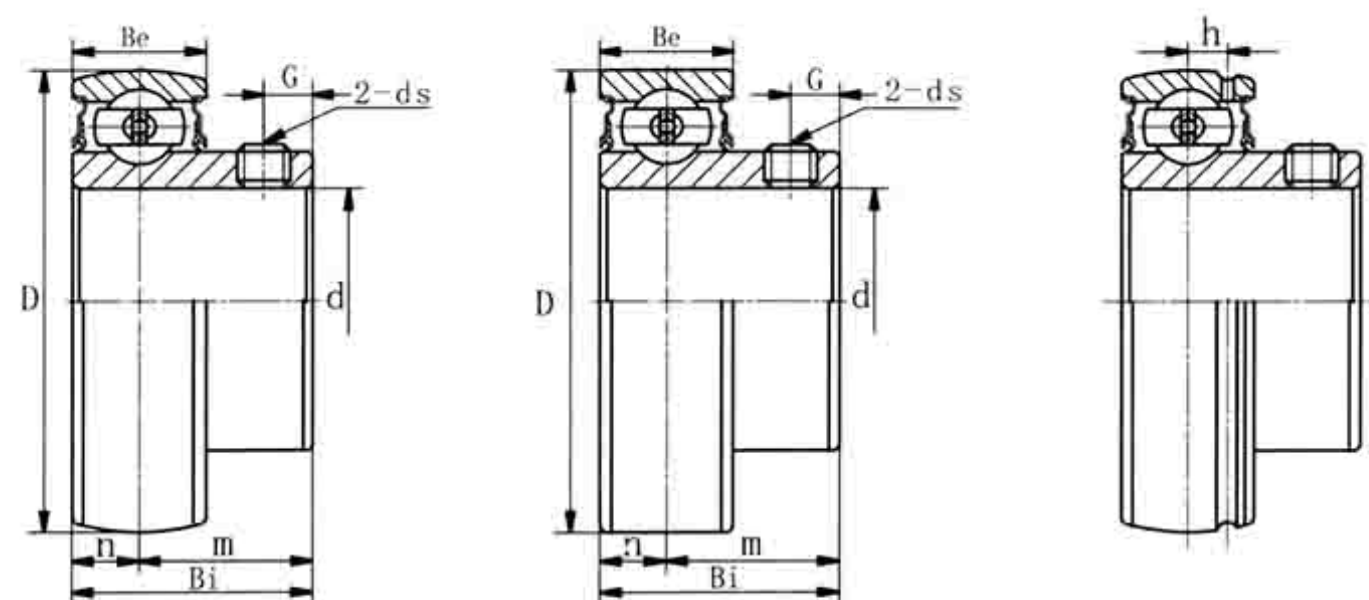
轴承代号 Bearing	轴径 Shaft Dia.	外形尺寸 (英寸) 或 (毫米) Dimensions (in) or (mm)													额定动负荷 Basic Load Rating	额定静负荷 Basic Static Load Rating	重量 Weight
No.	d	D	Bi	Be	n	m	E	a	h	R	j	p	G	ds	(Kgf)	(Kgf)	(Kg)
SER 201	12	1.8504	1.2205	0.6260	0.5000	0.7205	0.4760	0.0421	0.1575	0.1630	0.0969	2.0478	0.1890	1/4-28UNF	1010	630	0.22
201-8	1/2	47	31.0	15.9	12.7	18.3	12.09	1.07	4.0	4.14	2.46	52.7	4.8	M6X1.0			
SER 202	15	1.8504	1.2205	0.6260	0.5000	0.7205	0.4760	0.0421	0.1575	0.1630	0.0969	2.0748	0.1890	1/4-28UNF	1010	630	0.22
202-10	5/8	47	31.0	15.9	12.7	18.3	12.09	1.07	4.0	4.14	2.46	52.7	4.8	M6X1.0			
SER 203	17	1.8504	1.2205	0.6260	0.5000	0.7205	0.4760	0.0421	0.1575	0.1630	0.0969	2.0748	0.1890	1/4-28UNF	1010	630	0.22
203-11	1 1/16	47	31.0	15.9	12.7	18.3	12.09	1.07	4.0	4.14	2.46	52.7	4.8	M6X1.0			
SER 204-12	3/4	1.8504	1.2205	0.6260	0.5000	0.7205	0.4760	0.0421	0.1575	0.1630	0.0969	2.0748	0.1890	1/4-28UNF	1010	630	0.21
204	20	47	31.0	15.9	12.7	18.3	12.09	1.07	4.0	4.14	2.46	52.7	4.8	M6X1.0			
SER 205-14	7/8	2.0472	1.3740	0.7520	0.5158	0.8583	0.6020	0.0421	0.2047	0.2260	0.0969	2.2795	0.2205	1/4-28UNF	1100	710	0.27
205-15	1 5/16	52	34.9	19.1	13.1	21.8	15.29	1.07	5.2	5.74	2.46	57.9	5.6	M6X1.0			
205	25																
205-16	1																
SER 206-18	1 1/8	2.4409	1.5000	0.8740	0.6260	0.8740	0.6701	0.0650	0.2205	0.2331	0.1291	2.6654	0.2205	1/4-28UNF	1530	1020	0.39
206	30																
206-19	1 3/16	62	38.1	22.2	15.9	22.2	17.02	1.65	5.6	5.92	3.28	67.7	5.6	M6X1.0			
206-20	1 1/4																
SER 207-20	1 1/4	2.8346	1.6890	0.9370	0.6890	1.0000	0.7362	0.0650	0.2205	0.2645	0.1291	3.0944	0.2560	5/16-24UNF	2020	1390	0.56
207-22	1 3/8																
207	35	72	42.9	23.8	17.5	25.4	18.62	1.65	5.6	6.72	3.28	78.6	6.5	M8X1.0			
207-23	1 7/16																
SER 208-24	1 1/2	3.1496	1.9370	1.0945	0.7480	1.1890	0.8905	0.0650	0.2520	0.3433	0.1291	3.4094	0.3150	5/16-24UNF	2280	1590	0.72
208	40	80	49.2	27.8	19.0	30.2	22.62	1.65	6.4	8.72	3.28	86.6	8.0	M8X1.0			
SER 209-26	1 5/8	3.3465	1.9370	1.0945	0.7480	1.1890	0.8905	0.0650	0.2520	0.3433	0.1291	3.6062	0.3150	5/16-24UNF	2560	1810	0.90
209-27	1 11/16																
209-28	1 3/4	85	49.2	27.8	19.0	30.2	22.62	1.65	6.4	8.72	3.28	91.6	8.0	M8X1.0			
209	45																
SER 210-30	1 7/8	3.5433	2.0315	1.1260	0.7480	1.2835	0.8906	0.0949	0.2953	0.3275	0.1291	3.7992	0.3740	3/8-24UNF	2750	2020	0.93
210-31	1 15/16																
210	50	90	51.6	28.6	19.0	32.6	22.62	2.41	7.5	8.32	3.28	96.5	9.5	M10X1.0			
210-32	2																
SER 211-32	2	3.9370	2.1890	1.189	0.8740	1.3150	0.9535	0.0949	0.2952	0.3590	0.1291	4.1929	0.3740	3/8-24UNF	3400	2550	1.28
211	55	100	55.6	30.2	22.2	33.4	24.22	2.41	7.5	9.12	3.28	106.5	9.5	M10X1.0			
211-35	2 3/16																
SER 212-36	2 1/4	4.3307	2.5630	1.2520	1.0000	1.5630	1.0165	0.0949	0.2952	0.3905	0.1291	4.5905	0.4370	3/8-24UNF	4100	3150	1.71
212	60																
212-39	2 7/16	110	65.1	31.8	25.4	39.7	25.82	2.41	7.5	9.92	3.28	116.6	11.1	M10X1.0			

SA 200
(light-duty) Spherical O.D.
CSA 200
(light-duty) Cylindrical O.D.
SA 200G
Relubricatable type



轴承代号 Bearing	轴径 Shaft Dia.	外形尺寸 (英寸) 或 (毫米) Dimensions (in) or (mm)													额定动负荷 Basic Load Rating	额定静负荷 Basic Static Load Rating	重量 Weight
No.	d	Be	D	B1	n	m	Bi	K	H	G	h	ds			(Kgf)	(Kgf)	(Kg)
SA 201	12	0.4724	1.5748	0.7520	0.2362	0.5157	1.1260	1.1260	0.5315	0.1968	0.1417	1/4-28UNF	960	480	0.13		
201-8	1/2	12	40	19.1	6.0	13.1	28.6	28.6	13.5	5.0	3.6	M6X1.0					
SA 202	15	0.4724	1.5748	0.7520	0.2362	0.5157	1.1260	1.1260	0.5315	0.1968	0.1417	1/4-28UNF	960	480	0.13		
202-10	5/8	12	40	19.1	6.0	13.1	28.6	28.6	13.5	5.0	3.6	M6X1.0					
SA 203	17	0.4724	1.5748	0.7520	0.2362	0.5157	1.1260	1.1260	0.5315	0.1968	0.1417	1/4-28UNF	960	480	0.13		
203-11	1 1/16	12	40	19.1	6.0	13.1	28.6	28.6	13.5	5.0	3.6	M6X1.0					
SA 204-12	3/4	0.5512	1.8504	0.8465	0.2756	0.5708	1.2205	1.3110	0.5315	0.1968	0.1535	1/4-28UNF	1000	630	0.15		
204	20	14	47	21.5	7.0	14.5	31.0	33.3	13.5	5.0	3.9	M6X1.0					
SA 205-14	7/8	0.5906	2.0472	0.8465	0.2953	0.5511	1.2205	1.5000	0.5315	0.1968	0.1535	1/4-28UNF	1100	710	0.22		
205	25	15	52	21.5	7.5	14	31.0	38.1	13.5	5.0	3.9	M6X1.0					
205-16	1																
SA 206-18	1 1/8	0.6299	2.4409	0.9370	0.3150	0.6220	1.4055	1.7520	0.6260	0.2362	0.1969	5/16-24UNF	1520	1020	0.30		
206	30	16	62	23.8	8.0	15.8	35.7	44.5	15.9	6.0	5	M8X1.0					
206-19	1 3/16																
206-20	1 1/4																
SA 207-20	1 1/4	0.6693	2.8346	1.0000	0.3346	0.6653	1.5315	2.1890	0.6890	0.2559	0.2165	5/16-24UNF	2010	1390	0.50		
207-22	1 3/8																
207	35	17	72	25.4	8.5	16.9	38.9	55.6	17.5	6.5	5.5	M8X1.0					
207-23	1 7/16																
SA 208-24	1 1/2	0.7087	3.1496	1.1890	0.3543	0.8346	1.7205	2.3740	0.7205	0.2559	0.2362	5/16-24UNF	2560	1810	0.67		
208-25	1 9/16																
208	40	18	80	30.2	9.0	21.2	43.7	60.3	18.3	6.5	6.0	M8X1.0					
SA 209-26	1 5/8	0.7480	3.3465	1.1890	0.3740	0.8150	1.7205	2.5000	0.7205	0.2559	0.2480	5/16-24UNF	3300	2100	0.73		
209-27	1 11/16																
209-28	1 3/4	19	85	30.2	9.5	20.7	43.7	63.5	18.3	6.5	6.3	M8X1.0					
209	45																
SA 210-30	1 7/8	0.7874	3.5433	1.1890	0.3937	0.7954	1.7205	2.7520	0.7205	0.2559	0.2559	5/16-24UNF	3500	2300	0.83		
210-31	1 15/16																
210	50	20	90	30.2	10	20.2	43.7	69.9	18.3	6.5	6.5	M8X1.0					
SA 211-32	2	0.9449	3.9370	1.2756	0.4724	0.8032	1.9055	3.0000	0.8150	0.3150	0.2835	3/8-24UNF	4400	3000	0.87		
211-34	2 1/8																
211	55	24	100	32.4	12	20.4	48.4	76.2	20.7	8	7.2	M8X1.0					
211-35	2 3/16																
SA 212-36	2 1/4	0.9449	4.3307	1.3150	0.4724	0.8426	2.0905	3.3150	0.8780	0.3150	0.3150	3/8-24UNF	4850	2960	1.3		
212	60																
212-38	2 3/8	24	110	33.4	12	21.4	53.1	84.2	22.3	8	8	M8X1.0					
212-39	2 7/16																

Note: Suffix "G" -Relub; Prefix "C" -Cylindrical O.D..



SB 200

(light-duty) Spherical O.D.

CSB 200

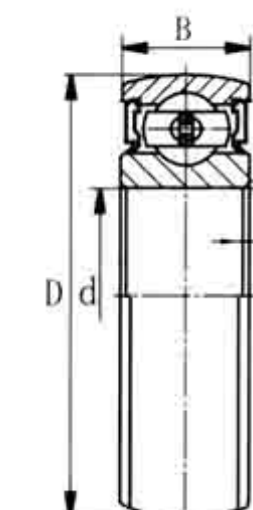
(light-duty) Cylindrical O.D.

SB 200G

Relubricatable type

CS 200

(normal-duty)



轴承代号 Bearing	轴径 Shaft Dia.	外形尺寸 (英寸) 或 (毫米) Dimensions (in) or (mm)								额定动负荷 Basic Dynamic Load Rating	额定静负荷 Basic Static Load Rating	重量 Weight
No.	d	Be	D	Bi	n	m	G	h	ds			
	(in)	(mm)								(Kgf)	(Kgf)	(Kg)
SB 201	12	0.4724	1.5748	0.8661	0.2362	0.6299	0.1772	0.1417	10-32UNF	760	450	0.10
201-8	1/2	12	40	22	6.0	16.0	4.5	3.6	M5X0.8			
SB 202	15	0.4724	1.5748	0.8661	0.2362	0.6299	0.1772	0.1417	10-32UNF	760	450	0.10
202-10	5/8	12	40	22	6.0	16.0	4.5	3.6	M5X0.8			
SB 203	17	0.4724	1.5748	0.8661	0.2362	0.6299	0.1772	0.1417	10-32UNF	760	450	0.10
203-11	11/16	12	40	22	6.0	16.0	4.5	3.6	M5X0.8			
SB 204-12	3/4	0.5512	1.8504	0.9843	0.2756	0.7087	0.1772	0.1535	1/4-28UNF	1000	630	0.15
204	20	14	47	25	7.0	18.0	4.5	3.9	M6X1.0			
SB 205-14	7/8	0.5906	2.0472	1.0630	0.2953	0.7677	0.2165	0.1535	1/4-28UNF	1100	710	0.18
205	25	15	52	27	7.5	19.5	5.5	3.9	M6X1.0			
205-16	1											
SB 206-18	1 5/8	0.6299	2.4409	1.1811	0.3150	0.8661	0.2165	0.1969	1/4-28UNF	1520	1020	0.27
206	30	16	62	30	8.0	22.0	5.5	5.0	M6X1.0			
206-19	1 3/16											
206-20	1 1/4											
SB 207-20	1 1/4	0.6693	2.8346	1.2598	0.3346	0.9252	0.2559	0.2165	5/16-24UNF	2010	1390	0.42
207-22	1 3/8	17	72	32	8.5	23.5	6.5	5.5	M8X1.0			
207	35											
207-23	1 7/16											
SB 208-24	1 1/2	0.7087	3.1496	1.3386	0.3543	0.9843	0.2756	0.2362	5/16-24UNF	2560	1810	0.60
208	40	18	80	34	9.0	25.0	7.0	6.0	M8X1.0			
SB 209-26	1 5/8	0.7480	3.3465	1.6220	0.3740	1.2480	0.3228	0.2480	5/16-24UNF	3260	2450	0.80
209-27	1 11/16	19	85	41.2	9.5	31.7	8.2	6.3	M8X1.0			
209	45											
209-28	1 3/4											
SB 210-30	1 7/8	0.7874	3.5433	1.6378	0.3937	1.2441	0.3622	0.2559	5/16-24UNF	3580	2300	0.83
210-31	1 15/16	20	90	41.6	10.1	31.6	9.2	6.5	M8X1.0			
210	50											
210-32	2											
SB 211-32	2	0.9449	3.9370	1.7835	0.4646	1.3189	0.3858	0.2835	5/16-24UNF	4400	2960	1.1
211-34	2 1/8	24	100	45.3	11.8	3.5	9.8	7.2	M8X1.0			
211	55											
211-35	2 3/16											
SB 212	60	0.9449	4.3307	2.1142	0.5866	1.5276	0.3858	0.3150	3/8-24UNF	4850	3300	1.30
212-36	2 1/4	24	110	53.7	14.9	38.8	9.8	8	M10X1.25			

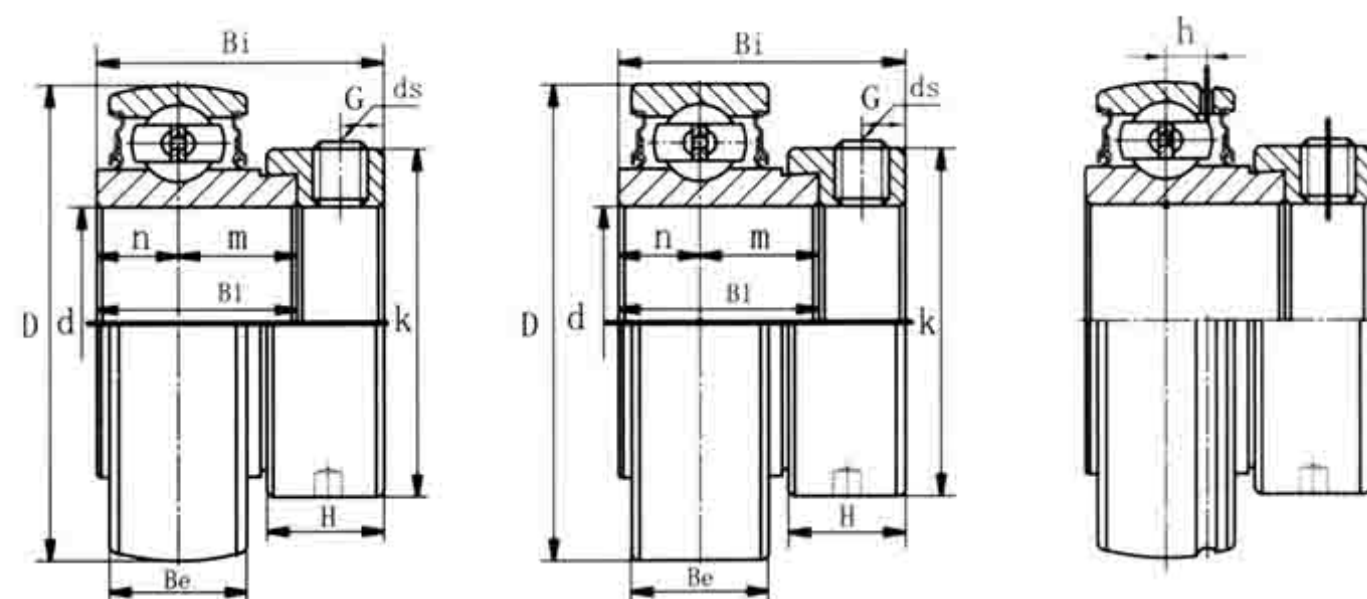
Note: Suffix "G" -Relub;Prefix "C" -Cylindrical O.D..

轴承代号 Bearing	外形尺寸 (毫米) Dimensions (mm)				额定动负荷 Basic Dynamic Load Rating (N)	额定静负荷 Basic Static Load Rating (N)	重量 Weight
No.	d	D	B	r			
				(min.)	Dynamic Cor	Static Cor	(kg)
CS 201	12	32	10	0.6	6800	3050	0.039
CS 202	15	35	11	0.6	7650	3720	0.039
CS 203	17	40	12	0.6	9580	4780	0.050
CS 204	20	47	14	1	12800	6650	0.095
CS 205	25	52	15	1	14000	7880	0.11
CS 305		62	17	1.1	22200	11500	0.20
CS 206	30	62	16	1	19500	11500	0.18
CS 306		72	19	1.1	27000	15200	0.30
CS 207	35	72	17	1.1	25500	15200	0.25
CS 307		80	21	1.5	33200	19200	0.40
CS 208	40	80	18	1.1	29500	18000	0.32
CS 308		90	23	1.5	40800	24000	0.55
CS 209	45	85	19	1.1	31500	20800	0.37
CS 309		100	25	1.5	52800	31500	0.73
CS 210	50	90	20	1.1	35000	23200	0.41
CS 310		110	27	2	61800	38000	0.95

ORAE SERIES

轴承代号 Bearing	外形尺寸 (毫米) Dimensions (mm)				额定动负荷 Basic Dynamic Load Rating (N)	额定静负荷 Basic Static Load Rating (N)	重量 Weight
No.	d	D	B	r			
				(min.)	Dynamic Cor	Static Cor	(kg)
ORAE 30NPPB	30	62	18	1	19500	11500	0.21
ORAE 40NPPB	40	80	22	1.1	29500	18200	0.38

ORAE Series

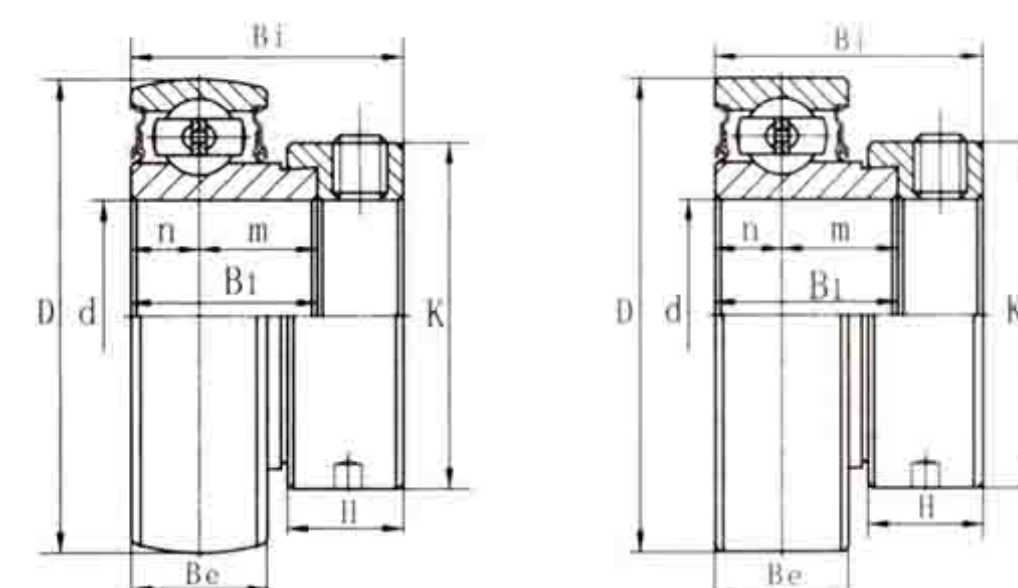


GRA 200
(light-duty) Spherical O.D.
RA 200
(light-duty) Cylindrical O.D.
GRA 200G
Relubricatable type

轴承代号 Bearing	轴径 Shaft Dia.	外形尺寸 (英寸) 或 (毫米) Dimensions(in)or(mm)											额定动负荷 Basic Dynamic Load Rating	额定静负荷 Basic Static Load Rating	重量 Weight	
No.	d	Be	D	B1	n	m	Bi	K	H	G	h	ds				
	(in) (mm)												(kgf)	(kgf)	(kg)	
GRA201	12	0.4724	1.5748	0.7520	0.2559	0.4961	1.1260	1.1260	0.5315	0.1968	0.1417	1/4-28UNF	960	480	0.13	
RA 201-8	1/2	12	40	19.1	6.5	12.6	28.6	28.6	13.5	5.0	3.6	M6X1.0				
GRA202	15	0.4724	1.5748	0.7520	0.2559	0.4961	1.1260	1.1260	0.5315	0.1968	0.1417	1/4-28UNF	960	480	0.13	
RA 202-10	8/5	12	40	19.1	6.5	12.6	28.6	28.6	13.5	5.0	3.6	M6X1.0	960	480	0.13	
GRA203	17	0.4724	1.5748	0.7520	0.2559	0.4961	1.1260	1.1260	0.5315	0.1968	0.1417	1/4-28UNF	960	480	0.13	
RA 203-11	1 1/16	12	40	19.1	6.5	12.6	28.6	28.6	13.5	5.0	3.6	M6X1.0				
GRA204-12	3/4	0.5512	1.8504	0.8465	0.2953	0.5510	1.2205	1.3110	0.5315	0.1968	0.1535	1/4-28UNF	1000	630	0.15	
RA 204	20	14	47	21.5	7.5	14	31.0	33.3	13.5	5.0	3.9	M6X1.0				
GRA205-14	7/8	0.5906	2.0472	0.8465	0.2953	0.5511	1.2205	1.5000	0.5315	0.1968	0.1535	1/4-28UNF				
RA 205	25	15	52	21.5	7.5	14	31.0	38.1	13.5	5.0	3.9	M6X1.0	1100	710	0.22	
205-16	1															
GRA206-18	1 1/8	30	0.6299	2.4409	0.9370	0.3543	0.5826	1.4055	1.7520	0.6260	0.236	0.1969	5/16-24UNF	1520	1020	0.3
RA 206	1 3/16	16	62	23.8	9.0	14.8	35.7	44.5	15.9	6.0	4	M8X1.0				
206-19	1 3/16															
206-20	1 1/4															
GRA207-20	1 1/4															
RA 207-22	1 3/8	35	0.6693	2.8346	1.0000	0.3740	0.6260	1.5315	2.1890	0.6890	0.2559	0.2165	5/16-24UNF	2010	1390	0.50
207	1 7/16	17	72	25.4	9.5	15.9	38.9	55.6	17.5	6.5	5.5	M8X1.0				
207-23	1 7/16															
GRA208-24	1 1/2	40	0.7087	3.1496	1.1890	0.4331	0.7559	1.7205	2.3740	0.7205	0.2559	0.2362	5/16-24UNF			
RA 208-25	1 9/16	18	80	30.2	11	19.2	43.7	60.3	18.3	6.5	6.0	M8X1.0	2560	1810	0.67	
208	1 1/2															
GRA209-26	1 5/8															
RA 209-27	1 11/16	45	0.8661	3.3465	1.1890	0.4331	0.759	1.7205	2.5000	0.7205	0.2559	0.2677	5/16-24UNF	3300	2100	0.73
209	1 1/2	22	85	30.2	11	19.2	43.7	63.5	18.3	6.5	6.8	M8X1.0				
209-28	1 3/4															
GRA210-30	1 7/8	50	0.7874	3.5433	1.1890	0.4331	0.7559	1.7205	2.7520	0.7205	0.2559	0.2559	5/16-24UNF			
RA 210-31	1 15/16	20	90	30.2	11	19.2	43.7	69.9	18.3	6.5	6.5	M8X1.0	3500	2300	0.83	
210	1 7/8															
GRA211-32	2															
RA 211-34	2 1/8	55	0.9449	3.9370	1.2756	0.4724	0.8032	1.9055	3.0000	0.8150	0.3150	0.2835	3/8-24UNF	4400	3000	0.87
211	2 1/8	24	100	32.4	12	20.4	48.4	76.2	20.7	8	7.2	M8X1.0				
211-35	2 3/16															
GRA212-36	2 1/4															
RA 212	2 3/8	60	0.9449	4.3307	1.4646	0.5315	0.9331	2.0905	3.3150	0.8780	0.3150	0.3150	3/8-24UNF	4850	2960	1.30
212-38	2 3/8	24	110	37.2	13.5	23.7	53.1	84.2	22.3	8	8	M8X1.0				
212-39	2 7/16															

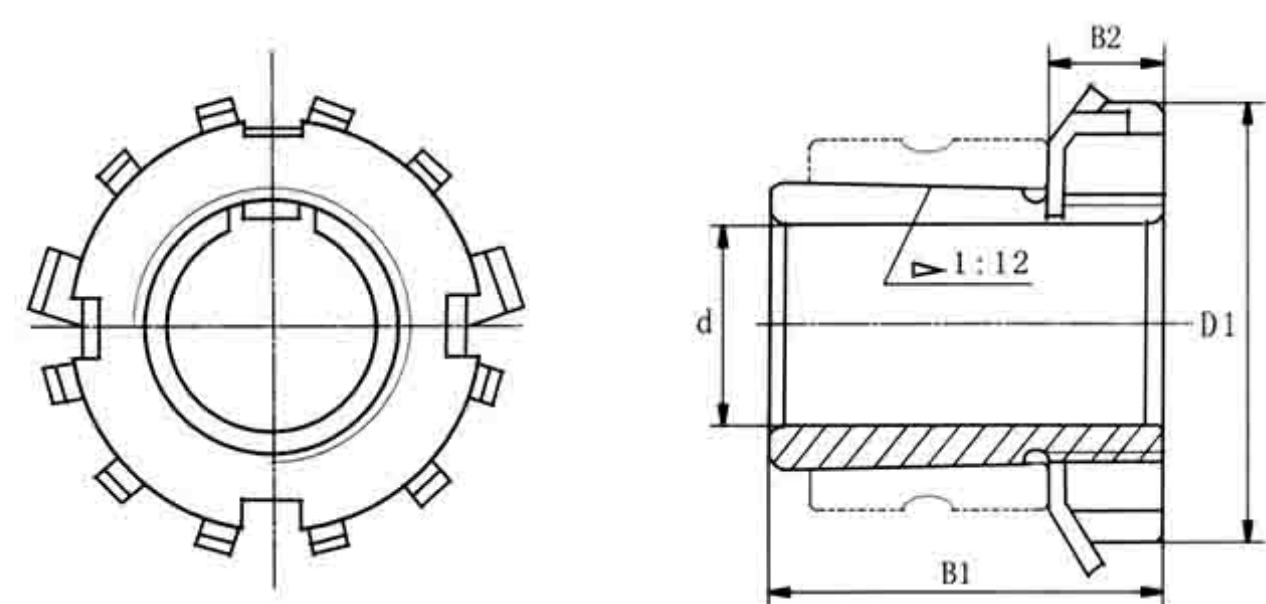
Note: Suffix "G" -Relub

SA 000
(light-duty) Spherical O.D.
CSA 000
(light-duty)
CSA 100
(light-duty)
Cylindrical O.D.



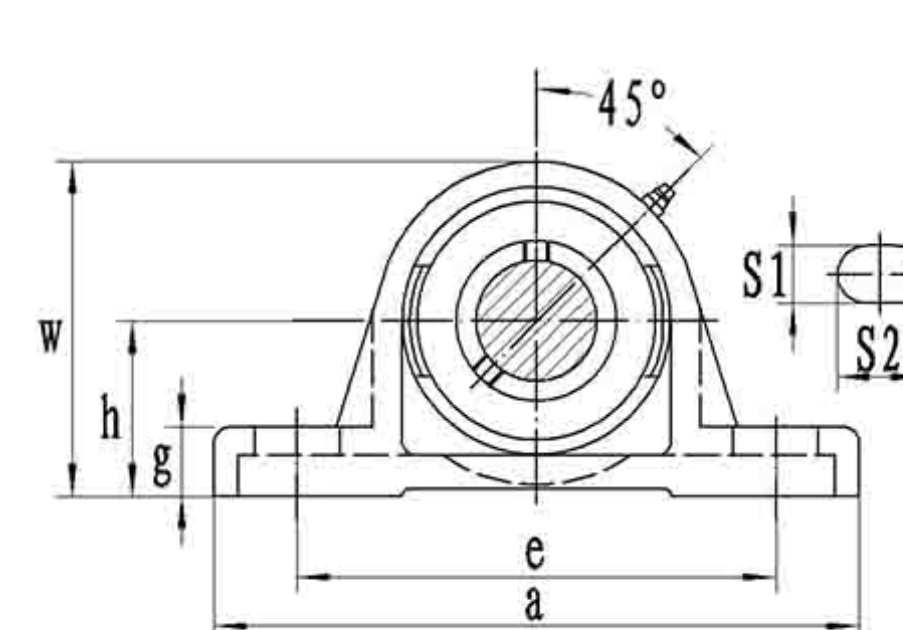
轴承代号 Bearing	轴径 Shaft Dia.	外形尺寸 (英寸) 或 (毫米) Dimensions(in) or (mm)										额定动负荷 Basic Dynamic Load Rating	额定静负荷 Basic Static Load Rating	重量 Weight
No.	d	Be	D	B1	n	m	Bi	K	H					
	(in) (mm)											(Kgf)	(Kgf)	(Kg)
SA 004-12	3/4	20	0.4724	1.6535	0.6575	0.2362	0.4213	0.9685	1.1719	0.4370		960	480	0.12
004	12	42	16.7	6.0	10.7	24.6	29.8	11.1						
CSA 104-12	3/4	12	0.4724	1.6535	0.6354	0.2362	0.3976	1.0402	1.2992	0.5197		960	480	0.12
SA 005-14	7/8	25	0.4724	1.8504	0.6890	0.2362	0.4528	1.0000	1.4213	0.4685		1020	600	0.15
005	12	47	17.5	6.0	11.5	25.4	36.1	11.9						
005-16	1													
SA 006-18	1 1/8	30	0.5118	2.1654	0.7283	0.2559	0.4724	1.0433	1.6732	0.4685		1340	840	0.28
006	13	55	18.5	6.5	12.0	26.5	42.5	11.9						
006-19	1 3/16													
006-20	1 1/4													

Note: Prefix "C" -Cylindrical O.D..

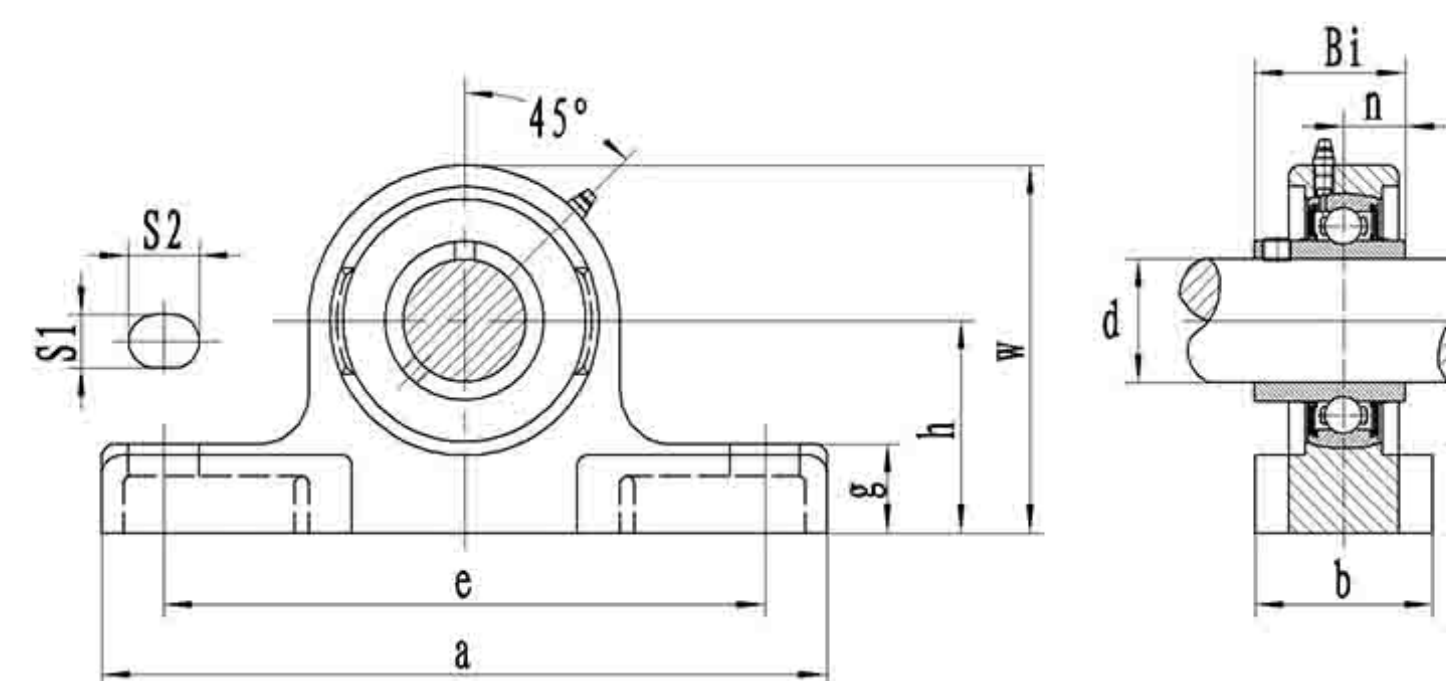


H 2300

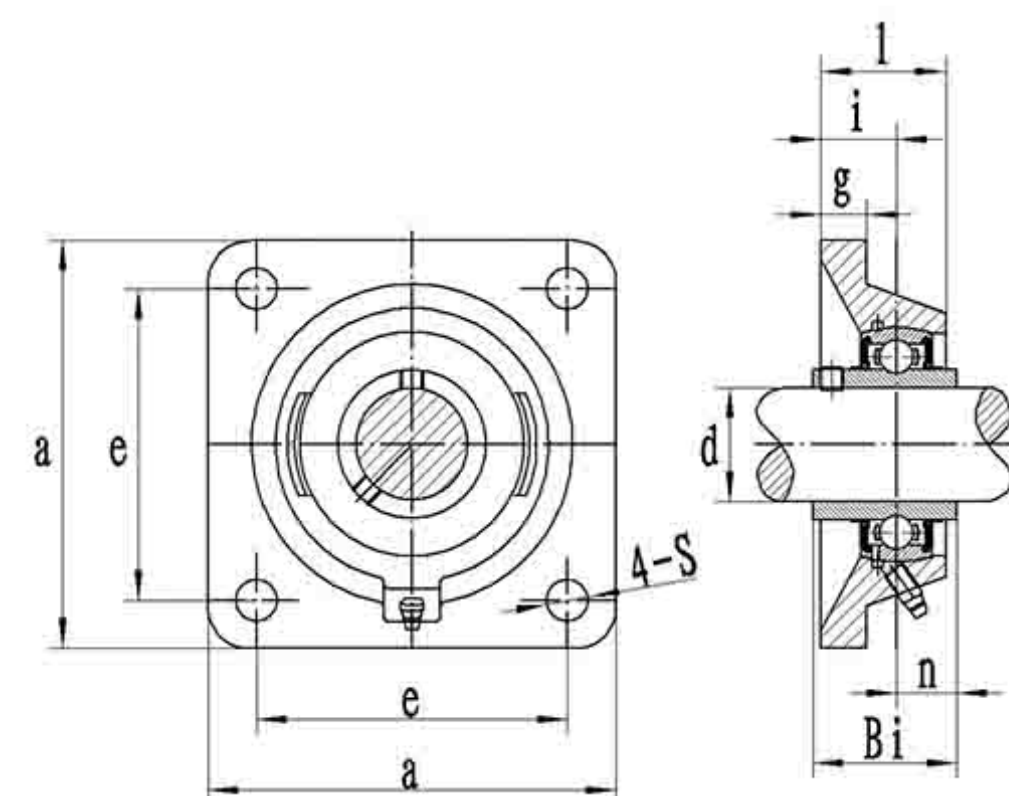
紧定套代号 Adapter		Bore Dia of Sleeve	外形尺寸 (毫米) Dimensions(mm)				Sleeve	Locknut	Washer	Bearing
No.		d		B1	D1	B2	No.	No.	No.	No.
		(in) (mm)								(Kfg)
HE H	2305 2305	3/4	20	35	38	8	AE 2305 A 2305	KM05	MB05	UK 205 UK X05
HS HA H HE	2306 2306 2306 2306	7/8 15/16 1	25	38	45	8	AS 2306 AA 2306 A 2306 AE 2306	KM06	MB06	UK 305 UK 206 UK X06 UK 306
HS H HA	2307 2307 2307	1 1/8 3/16	30	43	52	9	AS 2307 A 2307 AA 2307	KM07	MB07	UK 207 UK X07 UK 307
HE HS H	2308 2308 2308	1 1/4 3/8	35	46	58	10	AE 2308 AS 2308 A 2308	KM08	MB08	UK 208 UK X08 UK 308
HA HE H	2309 2309 2309	1 7/16 1 1/2	40	50	65	11	AA 2309 AE 2309 A 2309	KM09	MB09	UK 209 UK X09 UK 309
HS HA HE H	2310 2310 2310 2310	1 5/8 1 11/16 3/4	45	55	70	12	AS 2310 AA 2310 AE 2310 A 2310	KM10	MB10	UK 210 UK X10 UK 310 UK 211
HS HA H HE	2311 2311 2311 2311	1 7/8 1 15/16 2	50	59	75	12	AS 2311 AA 2311 A2 311 AE 2311	KM11	MB11	UK X11 UK 311 UK 212 UK X12
HS H	2312 2312	2 1/8	55	62	80	13	AS 2312 A 2312	KM12	MB12	UK 312 UK 213
HA HE H HS	2313 2313 2313 2313	2 3/16 2 1/4 3/8	60	65	85	14	AA 2313 AE 2313 A 2313 AS 2313	KM13	MB13	UK X13 UK 313 UK 215 UK X15
HA HE H	2315 2315 2315	2 7/16 2 1/2	65	73	98	15	AA 2315 AE 2315 A 2315	KM15	MB15	UK 315 UK 216 UK X16
HA HE H	2316 2316 2316	2 11/16 2 3/4	70	78	105	17	AA 2316 AE 2316 A 2316	KM16	MB16	UK 316 UK 217 UK X17
HA H HE	2317 2317 2317	2 15/16 3	75	82	110	18	AA 2317 A 2317 AE 2317	KM17	MB17	UK 317 UK 218 UK X18
H	2318		80	86	120	18	A 2318	KM18	MB18	UK 318
HE H	2319 2319	3 1/4	85	90	125	19	AE 2319 A 2319	KM19	MB19	UK X19 UK 319
HE H	2320 2320	3 1/2	90	97	130	20	AE 2320 A 2320	KM20	MB20	UK X20 UK 320
H	2322		100	105	145	21	A 2322	KM22	MB22	UK 322
H	2324		110	112	155	22	A 2324	KM24	MB24	UK 324
H	2326		115	121	165	23	A 2326	KM26	MB26	UK 326
H	2328		125	131	180	24	A 2328	KM28	MB28	UK 328

立式座
Pillow Blocks

带座轴承代号 Bearing Unit	轴径 Shaft Dia	外形尺寸 (英寸) 或 (毫米) Dimensions(in)or(mm)									
No.	d	h	a	e	b	S2	S1	g	w	Bi	n
	(in.) (mm)										
ASE06	30	42.9	158	98	40	21	14	17	82	38.1	15.9
ASE07	35	47.6	163	113	45	19	14	19	93	42.9	17.5
ASE08	40	49.2	179	123	48	25	14	19	99	49.2	19
ASE09	45	54	192	132	48	26	14	21	107	49.2	19
ASE10	50	57.2	200	144	54	23	18	21	115	51.6	19
ASE11	55	63.5	219	153	60	22	19	23	125	55.2	22.2

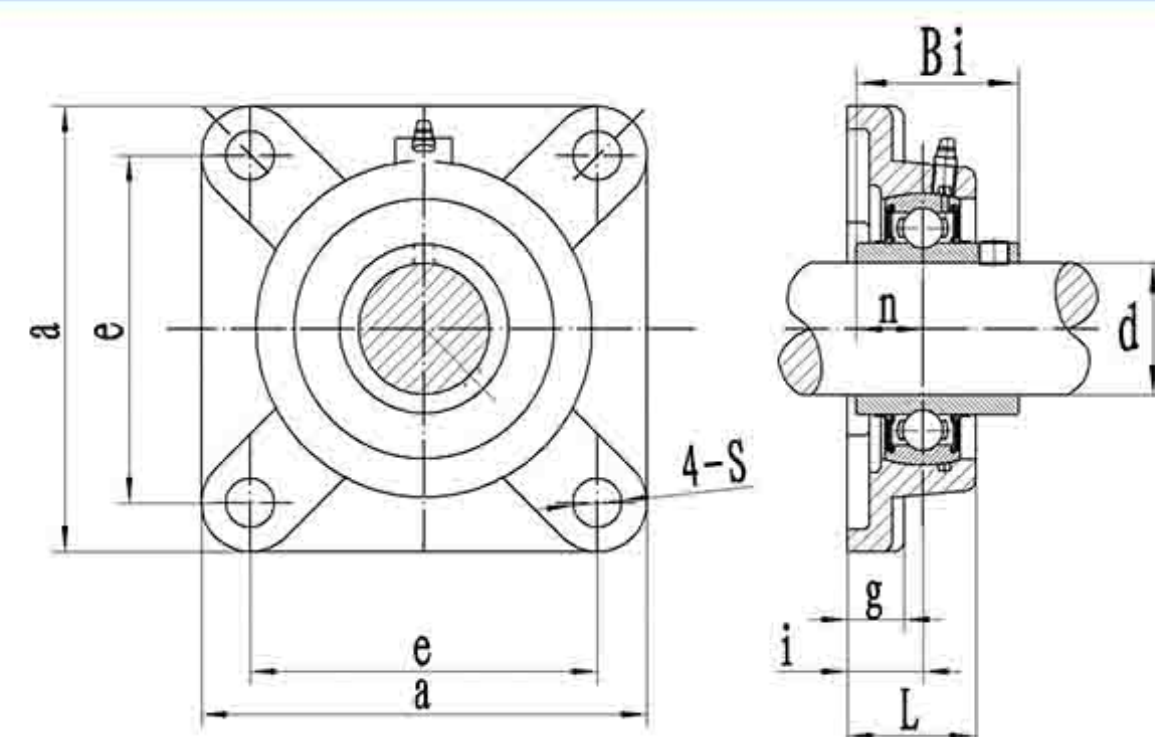
立式座
Pillow Blocks

带座轴承代号 Bearing Unit	轴径 Shaft Dia	外形尺寸 (英寸) 或 (毫米) Dimensions(in)or(mm)									
No.	d	h	a	e	b	S2	S1	g	w	Bi	n
	(in.) (mm)										
SNP07	35	60	205	170	50	20	15	25	104	42.9	17.5
SNP08	40	60	205	170	50	20	15	25	110	49.2	19
SNP09	45	60	205	170	50	20	15	25	112	49.2	19
SNP10	50	70	255	210	58	20	18	28	125	51.6	19
SNP11	55	70	255	210	60	25	18	30	130	55.6	22.2
SNP12	60	80	275	230	65	26	18	30	148	65.1	25.4
SNP15	75	95	320	260	75	30	22	32	175	77.8	33.3



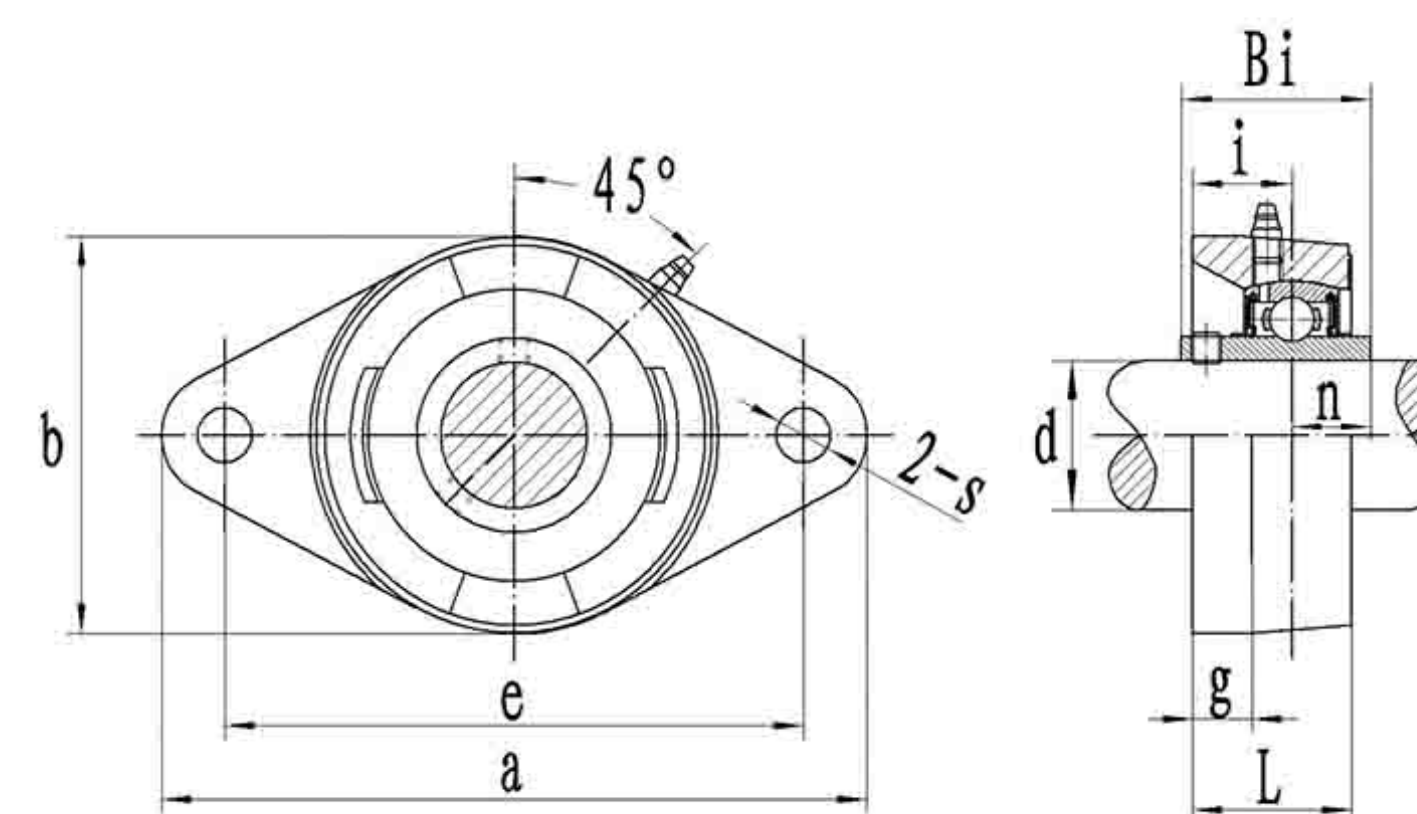
方形座
Flange Units(Square)

带座轴承代号 Bearing Unit	轴径 Shaft Dia	外形尺寸 (英寸) 或 (毫米) Dimensions(in)or(mm)							
No.	d	a	e	i	g	l	s	Bi	n
(in.) (mm)									
CJ04	20	86	63.5	19	10	30	11.5	31	12.7
CJ05	25	95	70	19	11	31	11.5	34.1	14.3
CJ06	30	108	82.5	20	12	29.5	11.5	38.1	15.9
CJ07	35	118	92	21	12.5	31	14	42.9	17.5
CJ08	40	130	101.5	24	13	34.5	14	49.2	19
CJ09	45	137	105	24	13	38	14	49.2	19
CJ10	50	143	111	28	13	39.5	18	51.6	19
CJ11	55	162	130	31	15	47	18	55.6	22.2
CJ12	60	175	143	34	16	51	18	65.1	25.4



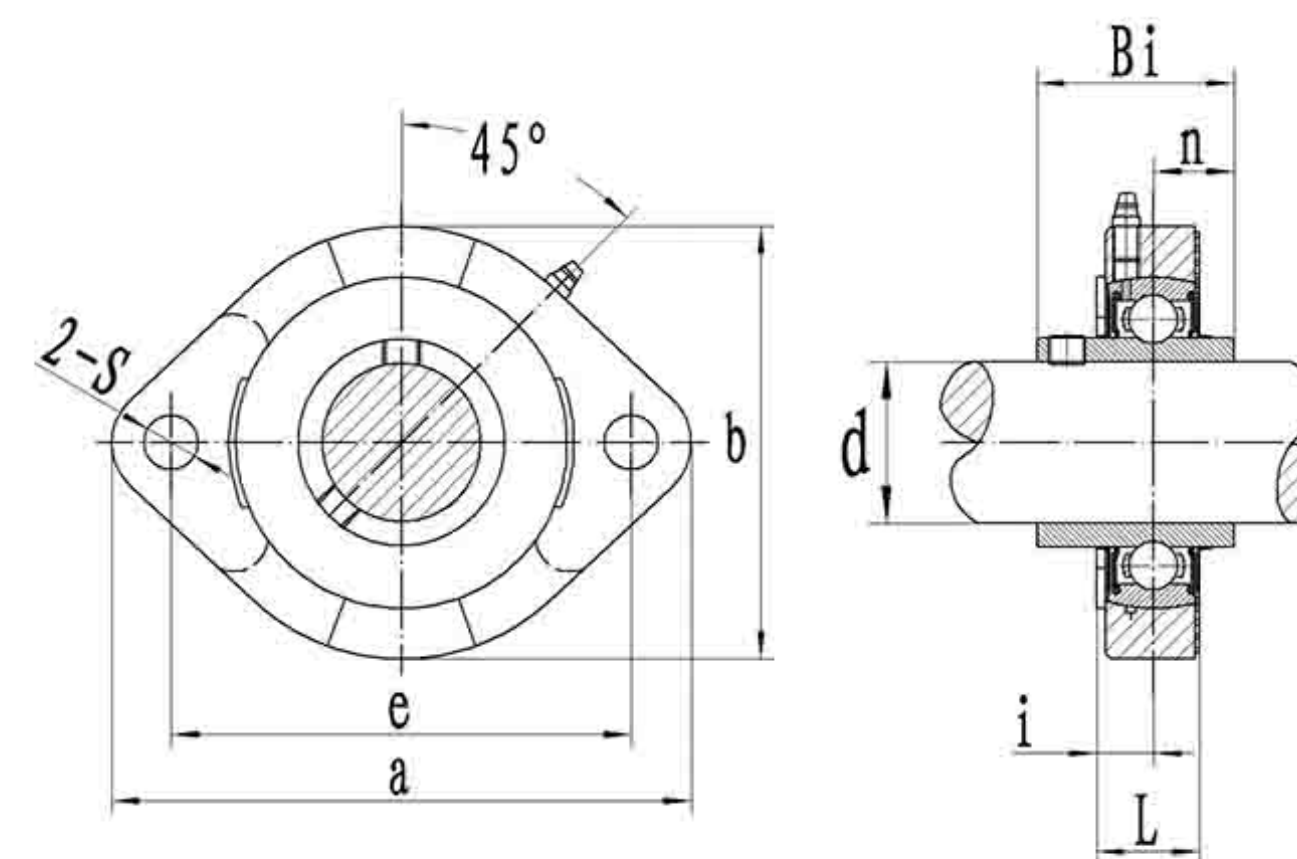
方形座
Flange Units(Square)

带座轴承代号 Bearing Unit	轴径 Shaft Dia	外形尺寸 (英寸) 或 (毫米) Dimensions(in)or(mm)							
No.	d	a	e	i	g	l	s	Bi	n
(in.) (mm)									
F206RX	30	108	82.5	20	15	33	12	38.1	15.9
F207RX	35	118	92	20	15	34	13.5	42.9	17.5
F208RX	40	130	101.5	23	15	37.5	13.5	49.2	19
F2016RX	80	197	152.4	39.8	25	57	21	82.6	33.3



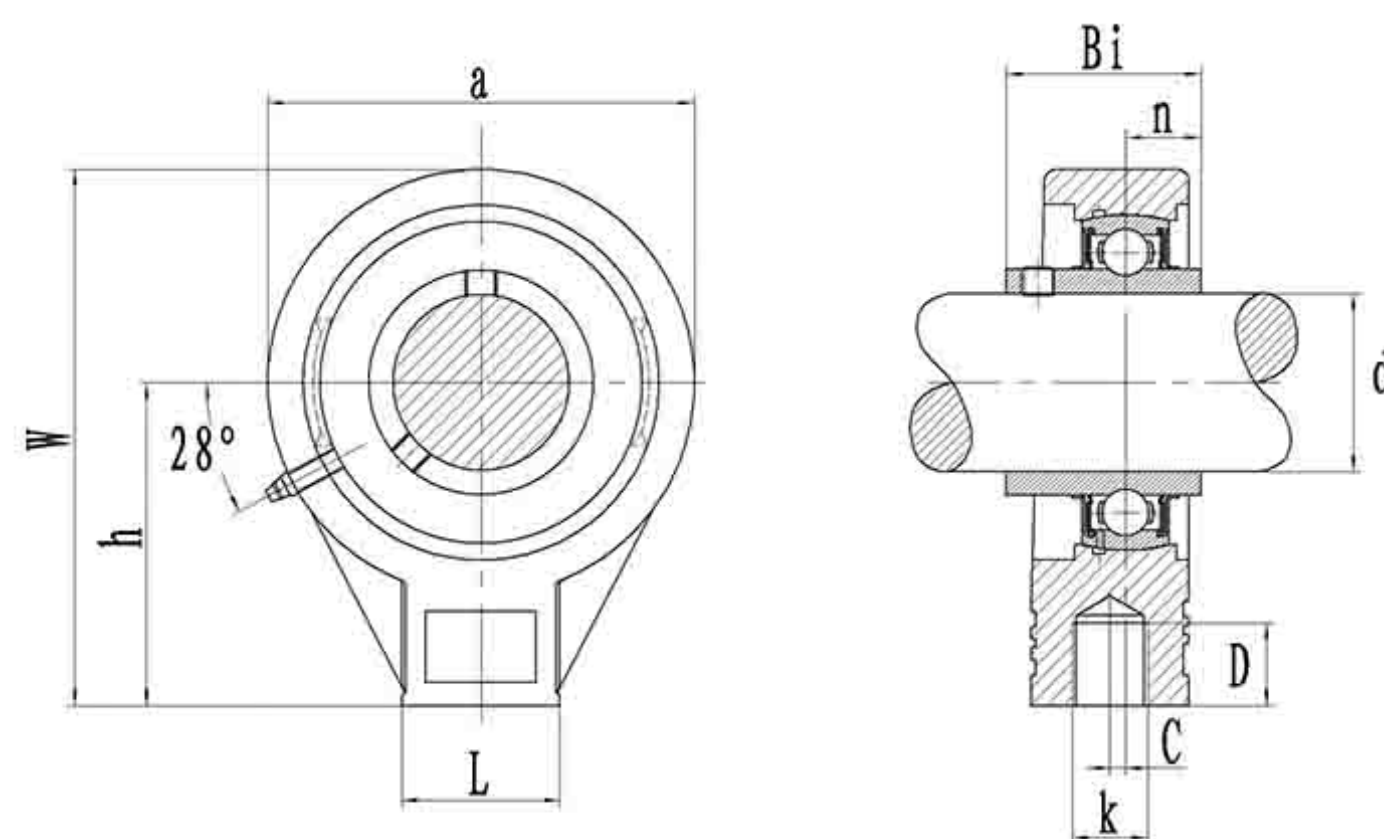
菱形座
Flange Units(Oval)

带座轴承代号 Bearing Unit	轴径 Shaft Dia	外形尺寸 (英寸) 或 (毫米) Dimensions(in)or(mm)							
No.	d	a	e	i	g	l	s	Bi	n
(in.) (mm)									
CJ03	17	99	76.5	17	9.5	25	11.5	27.4	11.5
CJ04	20	112	90	19	10	30	11.5	31	12.7
CJ06	30	142	116.5	20	12	32	11.5	38.1	15.9
CJ07	35	155	130	21	12.5	34	14	42.9	17.5
CJ09	45	180	148.5	24	13	38	14	49.2	19



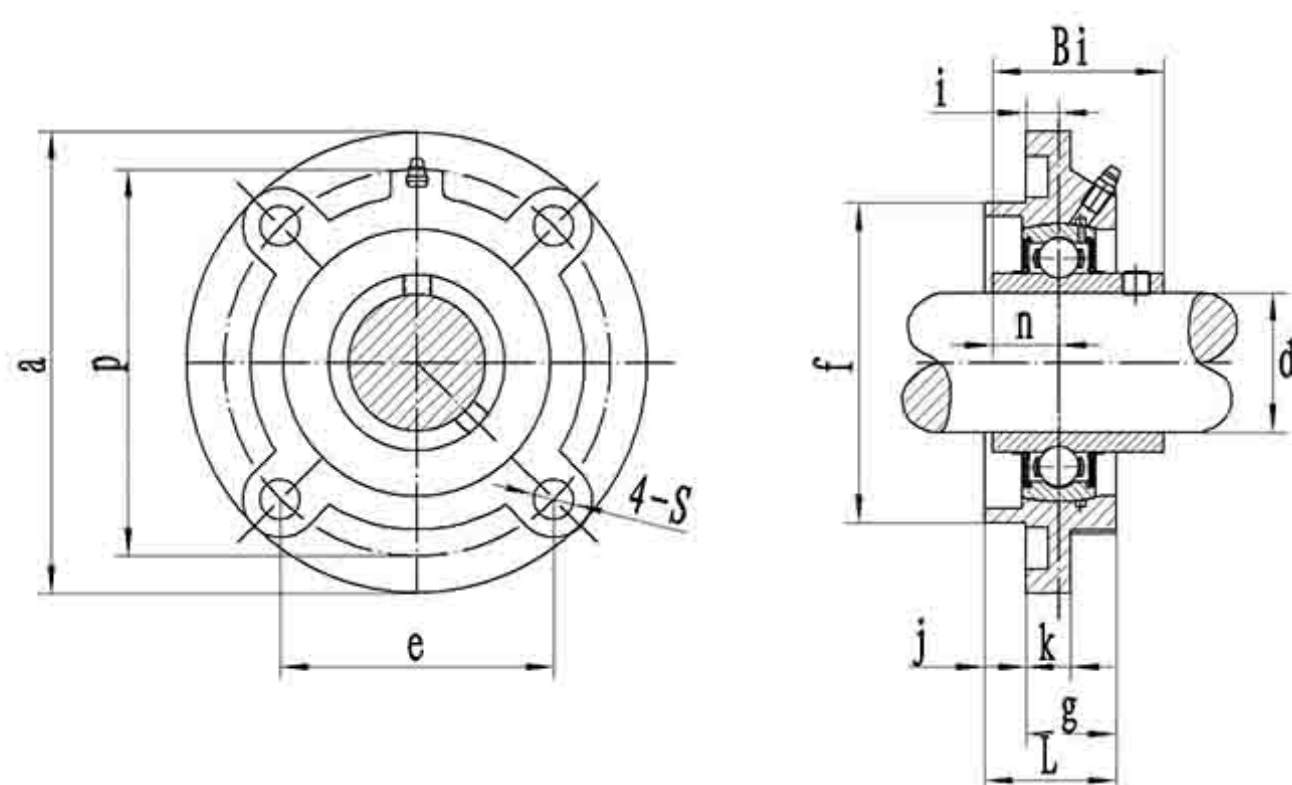
窄菱形座
Light-duty Oval Flange Units

带座轴承代号 Bearing Unit	轴径 Shaft Dia	外形尺寸 (英寸) 或 (毫米) Dimensions(in)or(mm)							
No.	d	a	e	i	L	S	b	Bi	n
(in.) (mm)									
GFLC30	30	113	90.5	12	21	12	85	38.1	15.9
GFLC35	35	126	100	12.5	22.5	12	94	42.9	17.5



悬吊式座
Screw Conveyor Units

带座轴承代号 Bearing Unit	轴径 Shaft Dia	外形尺寸 (英寸) 或 (毫米) Dimensions (in.) or (mm)								
No.	d	a	w	c	h	l	D	k	Bi	n
	(in.) (mm)									
RHC45	45	108	136	4	82	40	21	3/4"W	49.2	19
RHC50	50	110	140	5	85	48	21	3/4"W	65.1	19
RHC80	80	174	211	8	123.8	71	32	W 1"-8	82.6	33.3



凸台圆形座
Flange Cartridge Units

带座轴承代号 Bearing Unit	轴径 Shaft Dia	外形尺寸 (英寸) 或 (毫米) Dimensions(in)or(mm)											
													
(in.) (mm)													
RFC205	25	111	92.1	65.12	11.1	28.4	10.5	6.4	10	22	76.2	49.2	19
RFC206	30	127	104.8	74.1	7.5	30.7	12	10.7	10	20	85.725	49.2	19
RFC208	40	133	111.1	78.56	9.5	37.9	12	11.9	13	26	92.075	49.2	19
RFC209	45	155	130.2	92.07	5.6	33.9	13.5	11.9	13	22	107.95	49.2	19
RFC210	50	162	136.5	96.52	8.7	42.9	13.5	15.9	13	27	114.3	51.6	19

FZB

用心让世界运转更高效

Make the world more efficient by heart



高转速，低噪音，更稳定，高价值

High speed, low noise, more stable, high-value